

Community Need: Butte County

Proactive response vs **Reactive** response



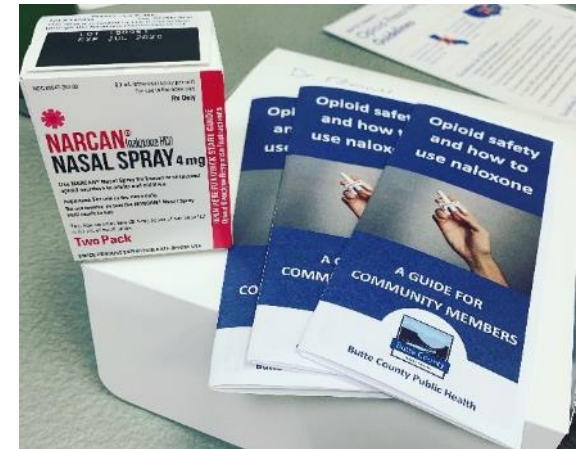
Indicator	Rank
Deaths-All Opioid	18 th
Deaths- Prescription	14 th
ED Visits-All opioids	15 th
ED Visits- Heroin	15 th
Hospitalizations-All opioid	1 st
Hospitalizations- Heroin	1 st
Opioid Prescriptions	1 st
MMEs	2 nd
Residents on > 90 MMEs of Opioids	5 th
Neonatal Abstinence Syndrome	5 th

Data from California Opioid Overdose Surveillance Dashboard <https://discovery.cdph.ca.gov/CDIC/ODdash/>

NAS rates from: Neonatal Abstinence Syndrome and Maternal Access to Treatment for Opioid Use Disorder in California Counties- Urban Institute (2005-2016) * rate is per 1000 births <https://www.urban.org/research/publication/neonatal-abstinence-syndrome-and-maternal-access-treatment-opioid-use-disorder-california-counties>

Community Need: Butte County

- Community **Education** programs, for both the general and medical community
- Introducing **Harm Reduction** as a method to decrease opioid overdoses and deaths
- Main distributor of **Narcan** to law enforcement and behavioral health

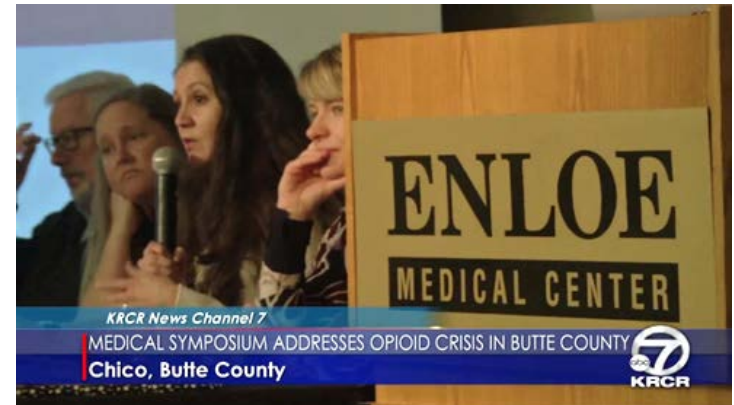


Our Niche

- We have a really good working relationship with the medical community
- We have identified local champions that lead the effort
- Cross county collaboration



January 12, 2019



March 8, 2019

Unique Perspective

- Background in Health Education
- Spanish speaking
- Connection to the university
- Cause-driven and passionate



Moving Forward

- Made me realize that in my career, I am more focused on “doing good” and making an impact in the community
- Enjoy making connections
- 100% sure of continuing in public health

